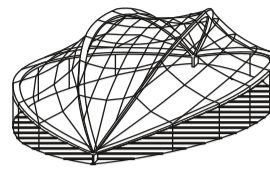


Bachelorstudiengang – Bauingenieurwesen & Umweltingenieurwesen (BI, UI)

BI-11 / UI-B03 **Statik und Tragwerkslehre A**

123 005 **Statik und Tragwerkslehre A**
2 St., Di. 12:30 - 14:00, HIB
Vorlesungsbeginn: 08.10.2024

123 006 **Übungen Statik und Tragwerkslehre A**
2 St., Fr. 12:30 - 14:00, HIC
Erste Übung: 11.10.2024



Sauer,
Meschke

Peters,
Neu,
Fründt

Erste Vorlesung
am Di., 08.10.24
um 12:30 - 14:00, HIB

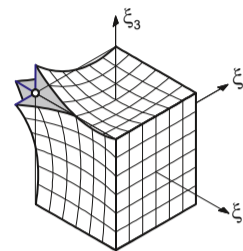
Moodle: <https://moodle.ruhr-uni-bochum.de/course/view.php?id=33625>

Masterstudiengang – Bauingenieurwesen (BI)

P08 **Finite Elemente Methoden**

127 012 **Lineare Finite-Elemente-Methoden**
2 St., Mi. 12:15 - 13:45, HIC
Vorlesungsbeginn: 09.10.2024

Übungen Lineare Finite-Elemente-Methoden
2 St., Mo. 10:15 - 11:45, HIC
Erste Übung: 14.10.2024



Sauer

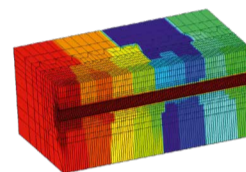
Daadouch,
Gottardi

Erste Vorlesung
am Mi., 09.10.24
um 12:15 - 13:45, HIC

Moodle: <https://moodle.ruhr-uni-bochum.de/course/view.php?id=12432>

BI-W 35 **Recent Advances in Numerical Modelling and Simulation**

129 224 **Recent Advances in Numerical Modelling and Simulation**
Blockveranstaltung
Beginn: Details s. Moodle



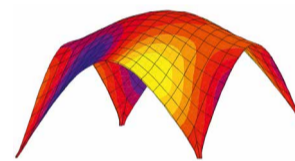
Sauer,
Zendaki

Einführungsveranstaltung
am Mi., 09.10.24
um 12:15 - 13:45, HIC

Moodle: <https://moodle.ruhr-uni-bochum.de/enrol/index.php?id=59622>

BI-WP 57 **Computational Modeling of Membranes and Shells**

127 506 **Computational Modeling of Membranes and Shells**
2 St., Mi. 14:15 - 15:45, IC 03/604
2 St., Mo. 14:15 - 15:45, IC 03/610
Vorlesungs- und Übungsbeginn: 09.10.2024



Sauer,
Nösges

Erste Vorlesung
am Mi., 09.10.24
um 14:15 - 15:45, IC 03/604

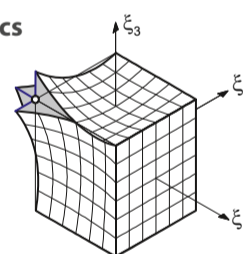
Moodle: <https://moodle.ruhr-uni-bochum.de/enrol/index.php?id=61603>

International Master Program – Computational Engineering (CE)

P05 **Finite Element Methods in Linear Structural Mechanics**

125 507 **Finite Element Methods in Linear Structural Mechanics**
2 hr., Wed. 12:15 - 13:45, HIC
1st lecture: 09.10.2024

Exercises in Finite Element Methods in Linear Structural Mechanics
2 hr., Mon. 10:15 - 11:45, HIC
1st exercise: 14.10.2024



Sauer

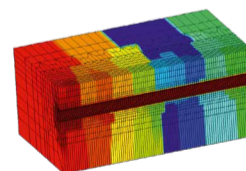
Daadouch,
Gottardi

First lecture
on Wed., 09.10.24
at 12:15 - 13:45, HIC

Moodle: <https://moodle.ruhr-uni-bochum.de/course/view.php?id=12432>

CE-W 04 **Recent Advances in Numerical Modelling and Simulation**

129 224 **Recent Advances in Numerical Modelling and Simulation**
Block course
1st lecture: Details see Moodle



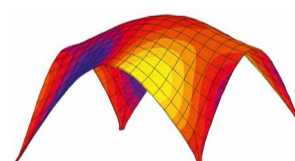
Sauer,
Zendaki

Introductory course
on Wed., 09.10.24
at 12:15 - 13:45, HIC

Moodle: <https://moodle.ruhr-uni-bochum.de/enrol/index.php?id=59622>

CE-WP 16 **Computational Modeling of Membranes and Shells**

127 506 **Computational Modeling of Membranes and Shells**
2 hr., Wed. 14:15 - 15:45, IC 03/604
2 hr., Mon. 14:15 - 15:45, IC 03/610
1st lecture and exercise: 09.10.2024



Sauer,
Nösges

First lecture
on Wed., 09.10.24
at 14:15 - 15:45, IC 03/604

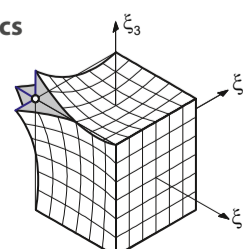
Moodle: <https://moodle.ruhr-uni-bochum.de/enrol/index.php?id=61603>

International Master Program – Subsurface Engineering (SE)

C2 **Computational Methods 1**

125 507 **Finite Element Methods in Linear Structural Mechanics**
2 hr., Wed. 12:15 - 13:45, HIC
1st lecture: 09.10.2024

Exercises in Finite Element Methods in Linear Structural Mechanics
2 hr., Mon. 10:15 - 11:45, HIC
1st exercise: 14.10.2024



Sauer

Daadouch,
Gottardi

First lecture
on Wed., 09.10.24
at 12:15 - 13:45, HIC

Moodle: <https://moodle.ruhr-uni-bochum.de/course/view.php?id=12432>