

Bachelor – Bauingenieurwesen & Umweltingenieurwesen (BI)

**Baukonstruktionen (BI-P05 - 122001)**

2 St., Di. 10:15 - 11:45, HIC  
2 St., Di. 14:00 - 15:30, HIC  
Beginn: 14.04.2026



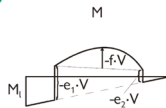
Sauer, Fründt  
Neu, Nösges,  
Schoen, Stöttelder

Erste Vorlesung  
Di., 14.04.26,  
10:15 - 11:45,  
HIC

Moodle: <https://moodle.ruhr-uni-bochum.de/course/view.php?id=70053>

**Statik und Tragwerkslehre B (BI-P15 - 124004)**

4 St., Mi. 08:30 - 11:45, HIC  
2 St., Do. 10:15 - 11:45, HIC  
Beginn: 15.04.2026



Sauer,  
Neu, Nösges

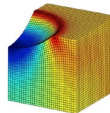
Erste Vorlesung  
Mi., 15.04.26,  
8:30 - 11:45,  
HIC

Moodle: <https://moodle.ruhr-uni-bochum.de/course/view.php?id=56359>

Master – Bauingenieurwesen (BI), Computational Engineering (CE), Subsurface Engineering (SE)

**NFEM Nonlinear Finite Element Methods for Structures (BI-WP05 / CE-WP04 / SE-CO-23 - 126515)**

2 h., Mon. 10:15 - 11:45, IC 04/408  
2 h., Wed. 16:00 - 17:30, IC 03/604  
Start: 13.04.2026



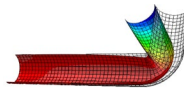
Sauer,  
Stöttelder

Introduction  
Mon., 13.04.26,  
10:15 - 11:45,  
IC 04/408

Moodle: <https://moodle.ruhr-uni-bochum.de/enrol/index.php?id=27013>

**AFEM Applied Finite Element Methods (BI-WP06 / CE-WP11 - 126519)**

2 h., Wed. 12:00 - 13:30, CIP IC 04/628  
4 h., Thu. 08:30 - 11:45, CIP IC 04/628  
Start: 15.04.2026



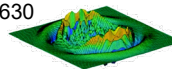
Lubowiecka,  
Neu

Introduction  
Mon., 13.04.26,  
10:15 - 11:45,  
IC 04/408

Moodle: <https://moodle.ruhr-uni-bochum.de/enrol/index.php?id=13252>

**TFEM Transient Finite Element and Finite Difference Methods (BI-WP60 / CE-WP30 - 126520)**

4 h., Tue. 14:00 - 17:30, IC 03/112 / CIP IC 04/630  
Start: 14.04.2026



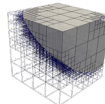
Butt,  
Sauer

Introduction  
Mon., 13.04.26,  
10:15 - 11:45,  
IC 04/408

Moodle: <https://moodle.ruhr-uni-bochum.de/course/view.php?id=63695>

**RFEM Recent Advances in Numerical Modeling and Simulation (BI-W35 / CE-W04 - 129224)**

2 h., to be announced, IC 6-90/156  
Start: see Moodle



Sauer,  
Ahmed

Introduction  
Mon., 13.04.26,  
10:15 - 11:45,  
IC 04/408

Moodle: <https://moodle.ruhr-uni-bochum.de/enrol/index.php?id=59622>

**PFEM Programming the Finite Element Method (BI-W39 / CE-WP10 - 128047)**

Block course 27.07. - 07.08.2026  
CIP IC 04/630



Baitsch, Ahmed,  
Sauer

Introduction  
Mon., 13.04.26,  
10:15 - 11:45,  
IC 04/408

Moodle: <https://moodle.ruhr-uni-bochum.de/enrol/index.php?id=10955>